

# West Superior Street Active Transportation Corridor Project



James Gittemeier, Senior Transportation Planner  
Mindy Granley, Sustainability Officer

# Background

- Historic change in roadway
- Business district revitalization – local, small business focus
- Community and City desire a “street of the future”
  - Be a model for street design in Duluth
- Regional Infrastructure with disproportionate neighborhood impacts

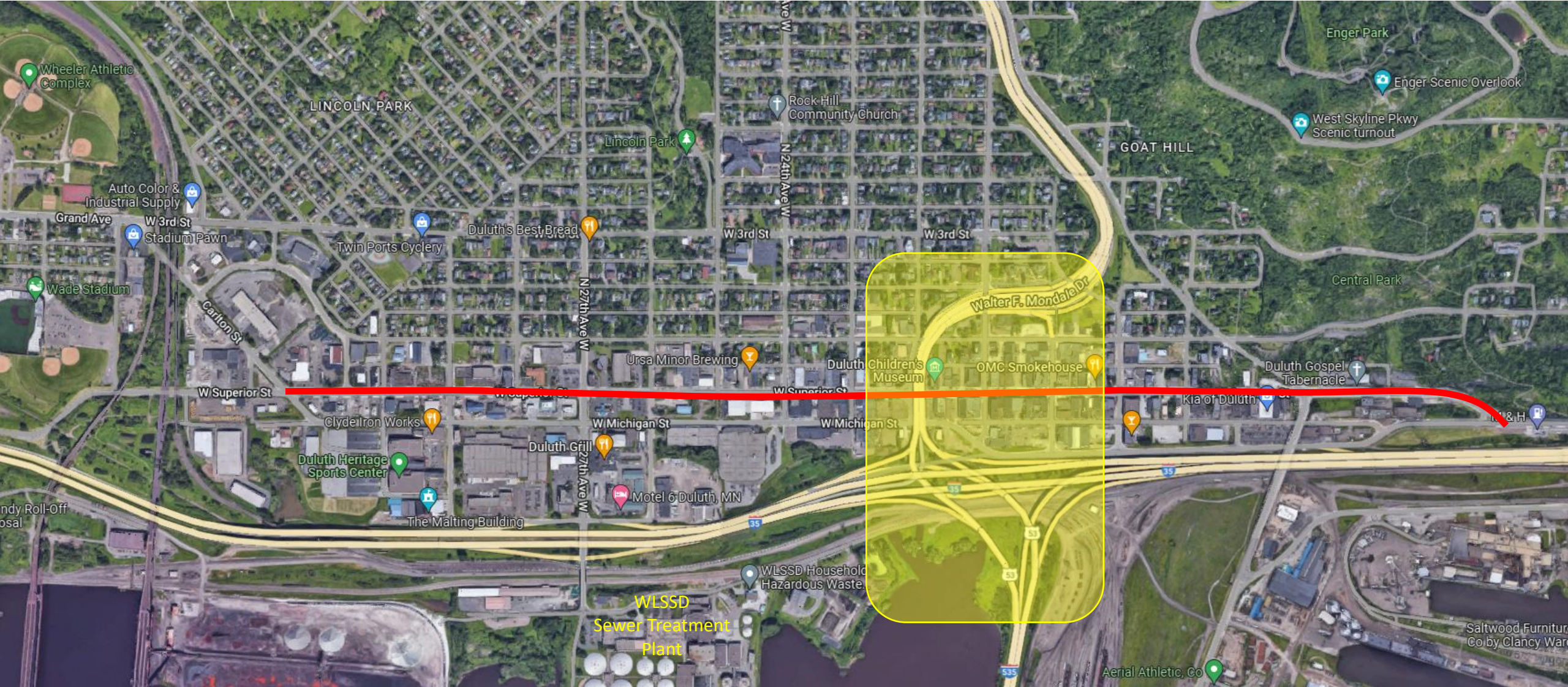
## LNPK 156



Social Determinants of Health Accelerator Plan, August 2022





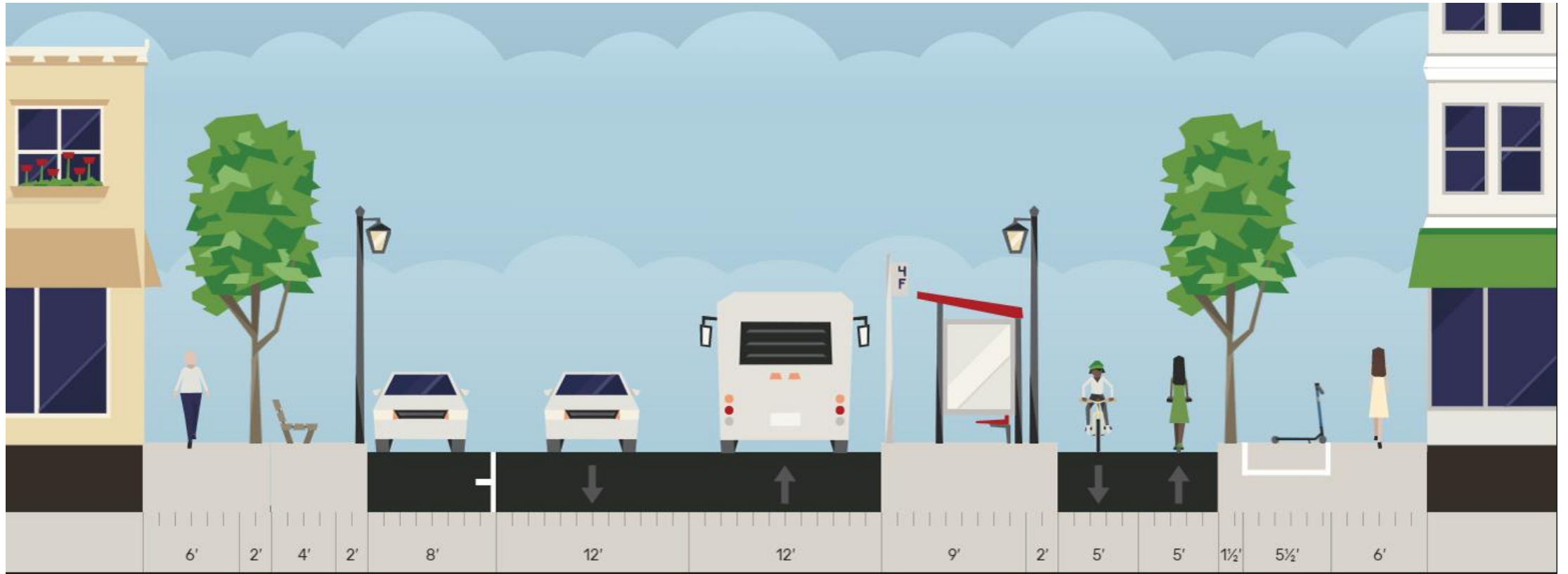
# West Superior Street Active Transportation Corridor Project



-  Length of street reconstruction
-  Twin Ports Interchange Reconstruction Project



# Superior Street - concept





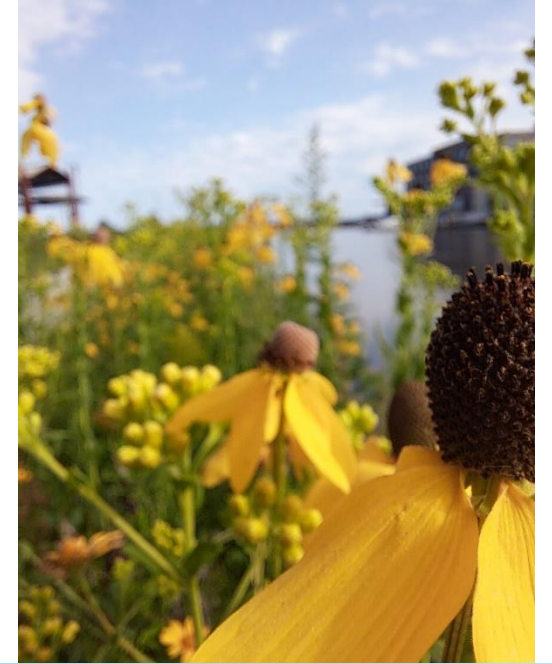


Photo courtesy of: [https://e-bikeduluth.com/full\\_service\\_rentals/](https://e-bikeduluth.com/full_service_rentals/)





# Cross City Trail (Duluth, MN) Mini-Master Plan – Lincoln Park Segment

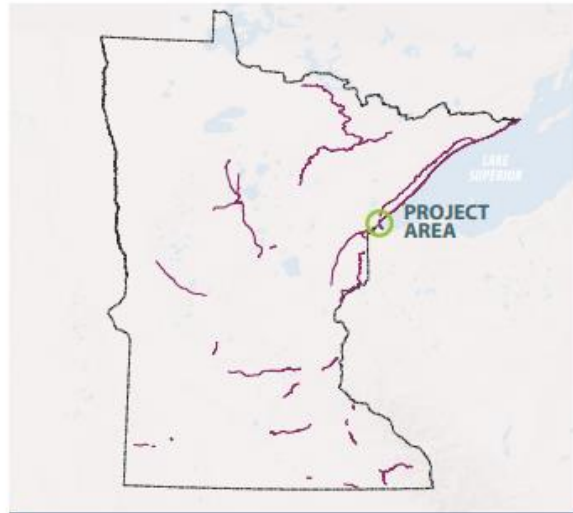


Figure 1.2: Context within the MN State Trail System

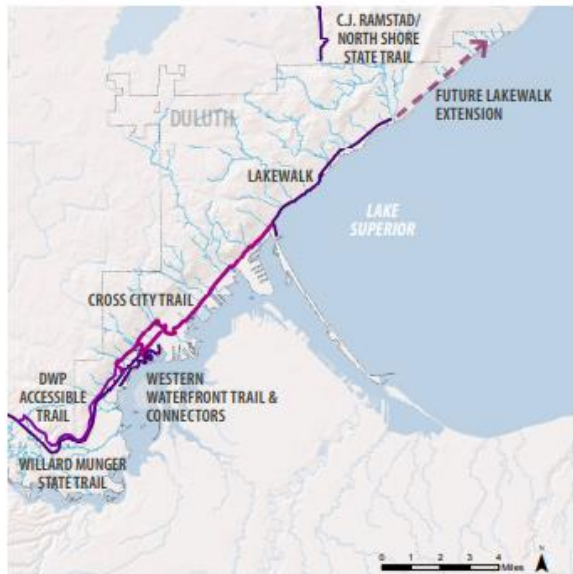


Figure 1.3: Regional Context



Figure 4.2: Cross City Trail - Segment I: The Lincoln Park Section - Lakewalk to Carlton Street - Already Constructed



May 2017

- USBR 41 On Road
- USBR 41 On Trail/Shared Use Path
- USBR 45 Mississippi River Trail Bikeway
- Minnesota Highways
- Railroad
- ▭ State Boundary
- ▭ County Boundaries
- ▭ National and State Parks
- ▭ Open Water

For more USBR 41 info:  
<http://www.dot.state.mn.us/bike/usbr41/index.html>



Mileage Chart:	St. Paul	White Bear Lake	North Branch	Hinckley	Duluth	Silver Bay	Grand Marais	Grand Portage State Park
St. Paul	-	14	46	82	153	217	272	315
White Bear Lake	14	-	32	68	139	203	258	301
North Branch	46	32	-	96	107	171	226	269
Hinckley	82	68	36	-	71	135	190	233
Duluth	153	139	107	71	-	64	119	162
Silver Bay	217	203	171	135	64	-	55	98
Grand Marais	272	258	226	190	119	55	-	43
Grand Portage State Park	315	301	269	233	162	98	43	-







# West Superior Street Active Transportation Corridor Project



James Gittemeier, Senior Transportation Planner  
Mindy Granley, Sustainability Officer